



Invite Pollinators

Plant Natives

Avoid Pesticides

Love Leaves

Limit Lighting

Reduce lawn size

Create a Meadow

**Talk to your
landscaper**

chang@hampton!



WHO WE ARE...

chang@hampton!

act locally, join community & make a difference

WHO WE ARE:

A group of alarmed
East Hampton
Residents.

WHY WE ARE ORGANIZING:

We can no longer
stand idle while
global warming
and species
collapse are
escalating
around us.

Our lawn culture
is poisoning us
and killing the
planet.

WHAT WE ARE DOING & ENCOURAGING:

Habitat restoration
and healthy yards
which means
re-imagining our
landscape together
with our landscap-
ers. Re-thinking our
landscaping is one
way everyone can
fight climate change,
global warming and
species collapse.
We are thinking
globally and
acting locally.

JOIN US!

changehamptonny@gmail.com



WHAT WE ARE ASKING...

THE EASTHAMPTON TOWN GOVERNMENT TO LEAD, COMMUNICATE & EDUCATE

regarding the terrible waste and destruction of species and poisoning of our environment by our current landscaping practices.

HERE'S HOW TO ADDRESS GLOBAL WARMING AND SPECIES COLLAPSE RIGHT HERE ON THE EASTERN END OF LI:

RESTORE HABITAT

Start a 'replant native species program' working with organizations that provide seeds and plants. Begin a program to remove invasive species.

PROMOTE HEALTHY YARDS & POLLINATING GARDENS Ban pesticides and chemical fertilizers. Encourage clover lawns and dedicate a major portion of

your yard to pollinating gardens to encourage the return of birds, butterflies, bees and insects.

HOW TO BEGIN:

MODEL THESE NEW PRACTICES ON MAJOR TOWN LANDS, not a tiny little hidden garden nobody sees.



LOVE LEAVES

Promote a program to turn leaves into mulch for gardens; we are losing insect populations from the dangerous practice of leaf blowers.

PROMOTE HEALTHY PRACTICES Stress environmental and worker safety to landscapers. Organize workshops and webinars by linking to groups and organizations **ALREADY** doing this work.

GO ELECTRIC

Set a date certain for all landscaping equipment to be either solar-powered or electric by no later than the spring of 2023.

EDUCATE PUBLIC through town meetings, news organizations, social media & special events. Resources listed here.



THE POLLINATOR PATHWAY MOVEMENT!

free of pesticides with an abundance of native plants essential to the lifecycle of our disappearing insects.

WHY IS IT SO IMPORTANT?

We are in a climate emergency. We are facing a catastrophic species collapse, a cascading loss of ecological resilience. **We are leaving our children a mess.**

Two prime causes: habitat destruction and pesticides. Lawns are a key culprit. They are ecological dead zones that require chemicals and an overuse of water to maintain. Chemical infused water becomes run-off into our bays.

Americans use as much fertilizer on lawns as is used in agriculture. About 40–60% ends up in surface or groundwater. Lawn irrigation consumes an eye-popping eight billion gallons of water daily.

THAT'S MADNESS!

Lawn maintenance has led to ubiquitous use of leaf blowers – hazardous to human health and lethal to insects.

WHY NATIVES?

Native grasses and plants establish a healthy, porous and rich soil, good for insects, for the food chain and a resilient environment. They require little or no irrigation once established.

EAST HAMPTON-SHOULD JOIN THE POLLINATOR PATHWAY MOVEMENT;

Dozens of communities across the country have established ambitious pollinator pathway action plans. It's time for East Hampton to join this movement already underway in Suffolk County.

WHAT IS A POLLINATOR PATHWAY?

Corridors linking fragmented, ruined habitat into a restored chain of pollinator friendly land



HABITAT LOSS!

Across the USA, turf lawns on private and public property have replaced more than 40 million acres of vital habitat, replacing it with habitat sterile green deserts. We need to enlist this land in a project to restore and connect viable habitat.

HOW TO CREATE A POLLINATOR PATHWAY:

East Hampton Town can provide wise and effective leadership by planting a native meadow/pollinator garden at town hall. It can be a model to inspire us to reimagine our landscapes and recreate biodiversity.

HOW TO GET THERE:

Promote a town-wide, public private partnership to stop our habitat destruction by reducing turf

monoculture and expanding pollinator friendly gardening.

THIS IS NOT A SACRIFICE!

This is an opportunity to see our lawns and gardens with new eyes.

The models already exist. We will be joining scores of communities who have signed on to pollinator pathways.

HERE ARE SOME OF THE BEST:

Lincoln, MA

Old Lyme, CT

Great Barrington, MA

Many of these Pollinator Pathway Action plans have been commissioned and/or supported by Preservation Land Trusts.

HOW TO CREATE A MOVEMENT:

We have reached out to a wide variety of community, environmental and horticultural activists, all of whom have expressed great interest in the Pollinator Pathway Project.

The Town with its prestige and grant writing expertise should be able to sign on and champion this effort.

The models abound.

FROM ECOLOGICAL DEAD ZONE TO POLLINATOR GARDEN AT TOWN HALL

What is a Pollinator garden?

A pesticide free area of native plants that provide nutrition and habitat for critical pollinators such as bees, birds, butterflies and other insects without which our ecology will collapse.

What is a Pollinator Pathway?

A web of pesticide free gardens & meadows creating pollinator habitats throughout our living and agricultural environments.

Current landscaping practices at East Hampton Town Hall **create ecological dead zones, remove critically important habitat** to our planetary survival, **waste precious resources** and **augment nitrate concentration** in our water systems.

Native plants provide **pollinating services** above ground and create **root systems** that “**clean**” **soil and water** by processing underground chemicals and minerals.

They also **remove** the need for **unhealthy lawn equipment, especially leaf blowers.**

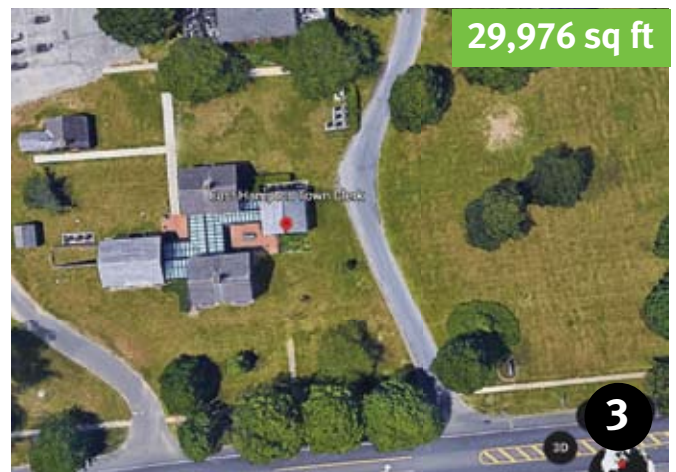
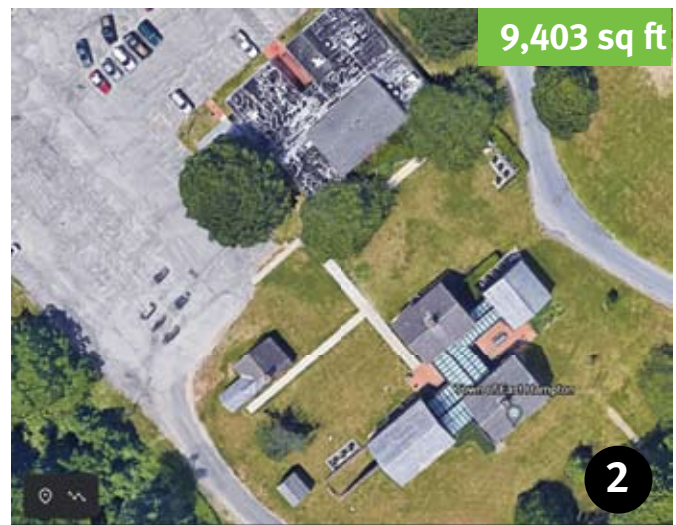
We need leaves on the ground for compost, soil enrichment and insect habitat.

Creating **pollinating gardens** with **pathways, benches** and **interpretive materials** enriches our lives. **Beauty, fresh air,** and a connectedness to the life-cycle of nature.

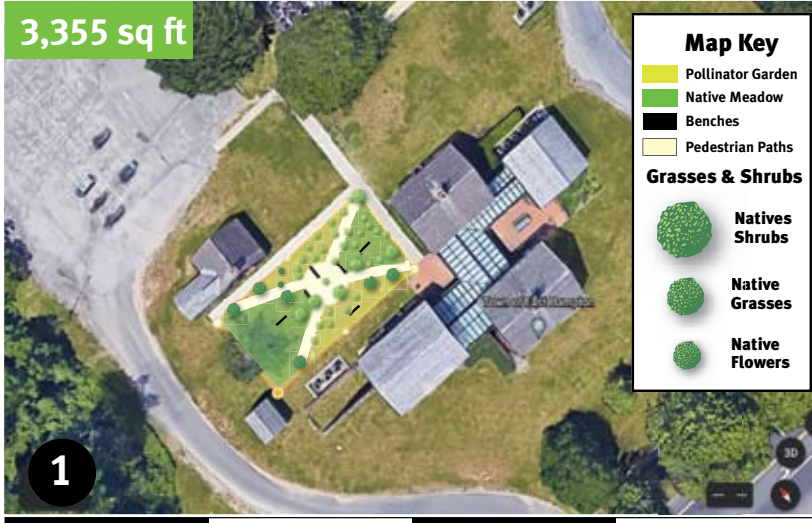
Town employees and visitors can enjoy this outdoor refuge.



chang@hampton!TM



THREE SOLUTIONS:

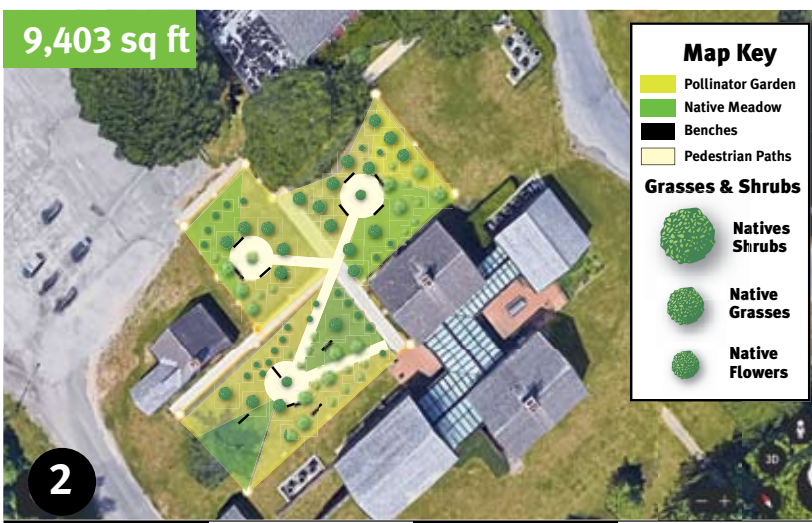


Solution 1:

Create a rectangular meadow/pollinator garden on the right side of town hall entrance using native plants, wildflowers, pathways, benches and interpretive materials.

BENEFITS: Town sets the example and models how to arrest climate change and species loss in a private/public partnership.

EST COSTS: \$15,000.

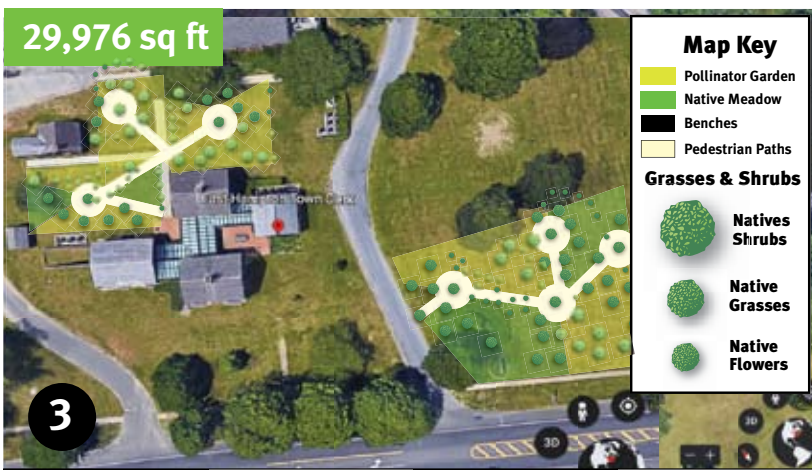


Solution 2:

Create a meadow/pollinator gardens on both sides of town hall entrance using native plants, wildflowers, pathways, benches and interpretive materials.

BENEFITS: Town sets example and models how to arrest climate change, species loss in a private/public partnership. Happier employees & visitors for sitting in nature and learning about pollinator gardens.

EST COSTS: \$25,000.



Solution 3:

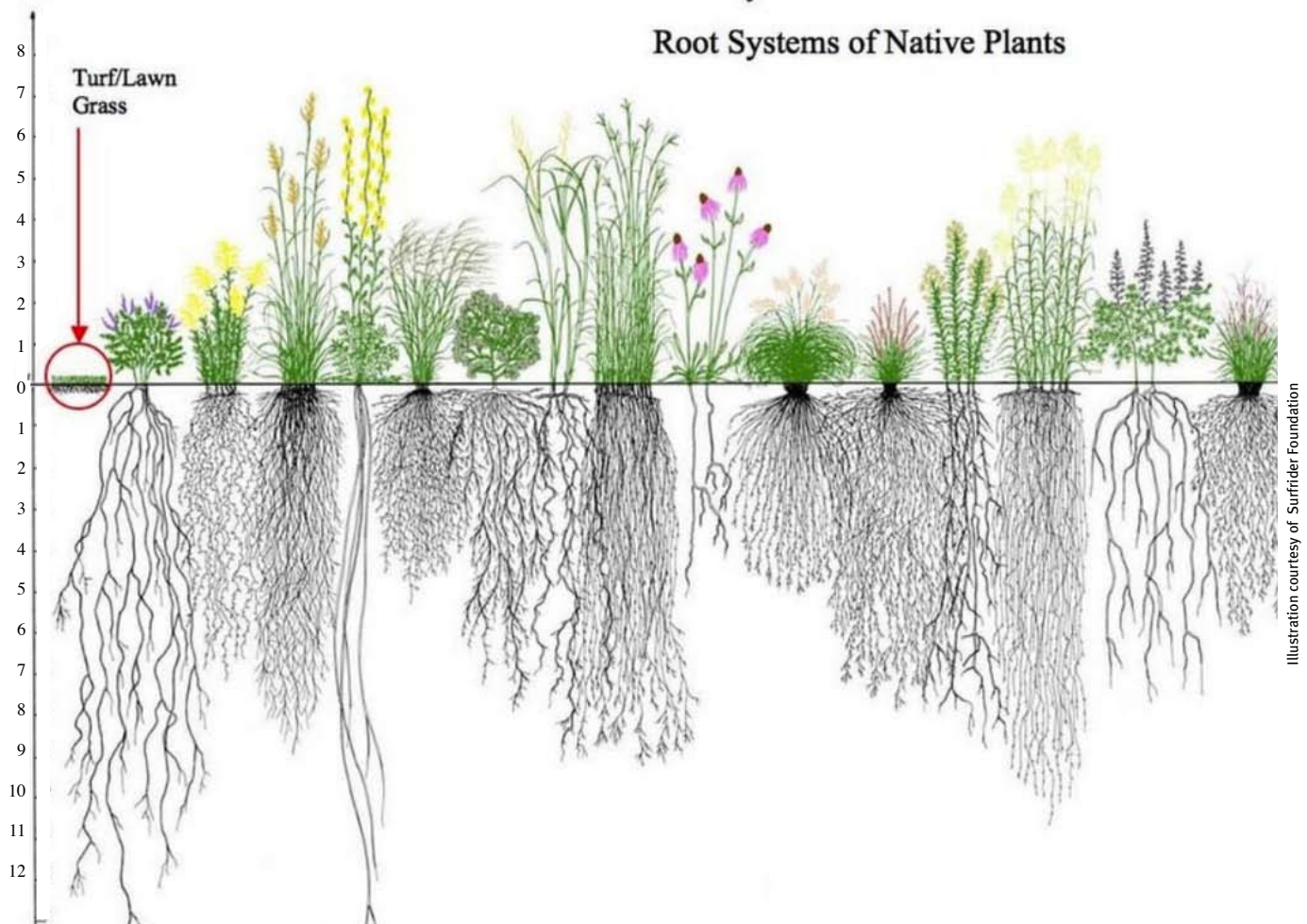
Solution 2 plus a 20,000 sq ft native meadow facing Hwy 27 to showcase the town's leadership in all interactions with the public and the environment to arrest climate change in a private/public partnership.

EST COSTS: \$35,000.

Average distance a small sweat honey bee travels: 90 yards



chang@hampton!TM



JOIN THE MOVEMENT!

The schematic above shows the effectiveness of native plants' long root systems and their ability to clean the soil.

Lawns by comparison do little to retain and reduce toxins. They are a part of the problem we are facing.

*THINK GLOBAL..!
ACT LOCAL..!
JOIN COMMUNITY..!*

**THE POLLINATOR
PATHWAY MOVEMENT
IS PART OF THE
SOLUTION!**

JOIN US HERE:
[changEhampton@
gmail.com](mailto:changEhampton@gmail.com)



chang@hampton!™



homage to Josef Müller-Brockmann

HABITAT DESTRUCTION IS LEADING TO MASSIVE SPECIES COLLAPSE. WE IGNORE THIS AT OUR OWN PERIL.

OUR IGNORANCE WILL NOT PROTECT US FROM CASCADING ENVIRONMENTAL COLLAPSE.

WITHOUT INSECTS WE DON'T HAVE A FOODCHAIN!

Leaf blowers play a dual role in environmental destruction. Gas leaf blowers produce an inordinate quantity of noise and air pollution, hazardous to human health. This is well understood.

What's less understood is that all leaf blowers play a devastating role in destroying insect habitat.

ACTIONS:

1. SET A FIRM 12/31/2022 DATE FOR BANNING ALL GAS BLOWERS. PERIOD.

This reduces leaf blower noise and atmospheric pollution. It also protects workers from breathing carcinogenic aerosols produced by GLBs.

2. BAN ALL BLOWERS DURING WINTER AND SUMMER MONTHS, LEAVING A LIMITED WINDOW FOR FALL AND SPRING CLEANUP.

Insects cannot thrive without winter leaf cover.

If we continue to destroy their habitat, we will suffer the consequences of species collapse. This targeted seasonal restriction protects habitat and reduces the use of leaf blowers to a limited portion of the year.





RESOURCES TO INFORM & INSPIRE TO ACTION!

Articles:

Our Lawns Are Killing us

New York Times: the First Thing We Do, Let's Kill All the Leaf Blowers

Get Off My Lawn – The Atlantic: How a DC community got leaf blowers banned

California regulators vote to outlaw new gas-powered lawn mowers, leaf blowers by 2024

Community Websites:

Bedford2030

Huntington Calm

Quiet Clean WDC

Quiet Clean Portland

Quiet Seattle

Quiet Communities

Quiet Montclair

Quiet Princeton

More helpful websites:

AGZA American Green Zone Alliance

(will do workshops with local gov & landscapers)

For the Birds

(Edwina Von Gal spearheads a program to grow pollinator gardens)

Xerces Organization

(can help with pollinating information/kits/school programs, etc.)

Healthy Yards

Leave Leaves Alone

Perfect Earth

Audubon

LETTERS TO THE EDITOR

at The East Hampton Star during 2021, from the resident members of changehampton!



MORE THAN 100 COMMUNITIES ACROSS THE USA HAVE ORGANIZED TO BAN GAS POWERED LEAF BLOWERS.

SOME HAVE BANNED ALL LEAF BLOWERS. WHY? LEAF BLOWERS DESTROY INSECT HABITAT AND CREATE A PUBLIC HEALTH HAZARD FROM NOISE & PARTICULATE POLLUTION:

California

BELVEDERE, CA
BERKLEY, CA
BEVERLY HILLS, CA
CARMEL, CA
CLAREMONT, CA
DEL MAR, CA
HERMOSA BEACH, CA
INDIAN WELLS, CA
LAWNDALE, CA
LAGUNA BEACH, CA
LOS ALTOS, CA
LOS ANGELES, CA
LOS GATOS, CA
MALIBU, CA
MANHATTAN BCH, CA
MENLO PARK, CA
MILL VALLEY, CA
NEWPORT BEACH, CA
OJAI, CA
PALO ALTO, CA
PIEDMONT, CA
SANTA BARBARA, CA
SANTA MONICA, CA
SOLANO BEACH, CA

TIBURON, CA
W HOLLYWOOD, CA

Illinois

ARLINGTON, IL
EVANSTON, IL
GLENCOE, IL
HIGHLAND PARK, IL
LINCOLNWOOD, IL
WILMETTE, IL
WINNETKA, IL

Colorado

ASPEN, CO
CARBONDALE, CO
WESTMINSTER, CO

Massachussetts

ARLINGTON, MA
BROOKLINE, MA

New Jersey

MONTCLAIR, NJ
PRINCELTON, NJ

New York

BRONXVILLE, NY
DOBBS FERRY, NY

GREAT NECK EST, NY
GREENBERG, NY
LARCHMONT, NY
NEW ROCHELLE, NY
OYSTER BAY, NY
RUSSELL GDNS, NY
SLEEPY HOLLOW, NY
TARRYTOWN, NY
THOMASTON VIL, NY
TUCKAHOE VILL, NY
WHITE PLAINS, NY
YONKERS, NY

Texas

TUCKAHOE VILL, TX
WHITE PLANES, TX
YONKERS, TX

Vermont

BURLINGTON, VT

Washington, DC

**WHERE IS
EAST HAMPTON,
NY...?**



chang@hampton!

act locally, join community & make a difference

WHO WE ARE

Shari Abramson,
LANDFALL
Robert Abramson,
LANDFALL
Jeanie Blake,
EH VILLAGE
Maryann Buquicchio,
EH VILLAGE
Mirra Bank,
EH VILLAGE
Richard Brockman,
EH VILLAGE
Duke Casper,
NORTHWEST
Robert Crozier,
SPRINGS
Sara Davison,
NORTHWEST
Nancy Erber,
EH TOWN
Gillian Gordon,
SPRINGS
Chris Gray,
EH VILLAGE
Leonard Green,
SAMMYS BEACH

Susan Meiselas,
WAINSCOTT
Judith Mitchell,
SAG HARBOR
Paul Muñoz,
SPRINGS
Gail Pellett,
SAMMYS BEACH
Tom Plant,
SAMMYS BEACH
Hal Rose,
SAMMYS BEACH
Lisa Rose,
SAMMYS BEACH
Lisa Schultz,
WAINSCOTT
Zaharo Sofianou,
SAMMYS BEACH
Muna Tseng,
EH VILLAGE
Stephan Van Dam,
SAMMYS BEACH
Edwina von Gal
SPRINGS

WHOM WE SUPPORT

234 The Birds
Garden Club of
East Hampton
Group for the
East End
Friends of
Georgica Pond
Horticultural Alliance
of the Hamptons
The Nature
Conservancy
Peconic Land Trust
Perfect Earth
South Fork Natural
History Museum
Surfrider Foundation

JOIN OUR MOVEMENT
changehamptonny@gmail.com



chang@hampton!
act locally, join community & make a difference